

1.1	1
1.2	2
1.3	2
1.42.....	3
1.5	3
1.6	3
1.7	10
1.8	12
1.9	14
1.10	18
1.11	19
2.1	20.0
2.0		

3.1	1
3.2	4
4.1	8
4.2	8
5.1	10
5.2	15
6.1	18
7.1	29
7.2	34
7.3	35
7.4	44
8.1	46

8.2	47
8.3	62
8.4	64
8.5	64
9.1	66
9.2	66
9.3	67
9.4	67
10.1	69
10.2	70
10.3	73
10.4	73
11.1	75
11.2	75
11.3	75

11.4	76
11.5	76
11.6	78
11.7	78
12.1	80
12.2	83
12.3	83
12.4	85
12.5	86
13.1	88
13.2	92
13.3	93
13.4	94
13.5	97
13.6	97
13.7	98

14.1	99
14.2	100
14.3	101
15.1	102
15.2	102
15.3	104
15.4	107
16.1	108
16.2	108
16.3	109
16.4	109
16.5	109
16.6	109
17.1	112

17.2	112
17.3	113
17.4	115
17.5	116
18.1	118
18.2	118
18.3	121
18.4	122
19.1	123
19.2	123
19.3	125

2

8

5.1

			126625.35		190
	70036.76			65002.66	
		10	6311.52		8.6-14
	32	11816.94		10.2	3 1#
14074.14		8.12	;2#	14112.78	8.12
	3#	14074.14		8.12	
1284.36	,	8.9		1753.8	
11	1#	1803.68	,	8	1803.68 ,
	8			2578.56	32
	4	391.16		14	1750
	2	1000			40000

2

8

2

51087.24

39403.51 77.13%

2132.94 4.18%

1246.09 2.44%

1845.00 3.61%

6459.70 12.64%

40000 20 2
18

2024

1 22 20000

91341500MADAFBJ02U

2021 2025

2021 46

2021 8

2024 - 2028

2028

12

100

20

1.5

8

4

5

2022

1.

2.

3.

1.

2.

3.

1.

2.

3.

1

(2019)

2022

2022

4.5 5

8.5-9

500

“ ”

[2004]28

[2006]31

[2008]24

[2009]56

1

2

1

2

3

8.5-9

2

3

4

5

6

7

8

9

10

11

12

1	
2023	2023 304
2	
3	2019
4	
5	
6	
7	
8	GB 3095-2012
9	GB 16297-1996
10	GB 9078-1996
11	(GB 3838-2002)

12	GB 8978-1996
13	GB 18918-2002
2006	
14	GB
12859-2001	
15	GB 3096-2008
16	GB 12348-2008
17	GB 50016-2014 2018
18	GB 50140-2005
19	
20	
21	
22	
23	GB 50187-2012
24	GB
50058-2014	
25	GB 50057-2010
26	GB 5083-1999
27	GB/T 12801-2008
28	TSG 21-2016
29	GB 50034-2013
30	GBZ1-2010

1

29

2019

26

2

3

4

5

6

1

2

3

Agaricus bisporus (Large) Sing.

		B2		
B1	B2	C	PP	D

5-12

4.5-9

1.5-3.5

CO2

2022

4222.54

"

2022

157.25

			2022	32.33	
					2022
	25.42	19.98			
					2022
2010	2200	4200			2024
6684		8.2		8.39	
2024			5.21		15.7%
	237190		31.5%		
					2016 - 2020
7.15%	9.7%	2023			2024
					4
2					
		2023		827.6	
2024					

2024

2023 - 2027

3.60% 2027

5014

1

2

a

b

c

d



2025 3000 2022 2000

+

	2010	2022		2200
4200			2022	4222.54
	2.14%	2022	3887.22	11.84%
2024			4325.66	

2023

827.6

1

2

3

1

7

1

2

24

800

5

800

3

4

5

6

2

1

2

3

4

3

1

CO2

10

25~35kg/m²

8 /

6

16

2

15

3

4

5

3 72

20000 /

3-1

72	1134	30	8	20901.89

1.5

31.5

6

6

4

4

	10~15kg/m ²	25~35kg/m ²
	1 /	8 /
		+

1

2/3

20

3

6

8

1

4~28

18~25

5~22

17~18

2
 70~80%
 85~90%

65%

60~70%

3
 pH
 6.8~7.0

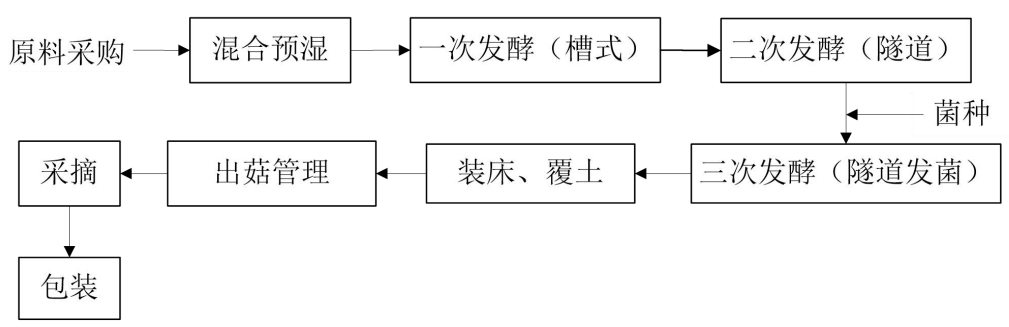
pH
 5~8

pH
 7~7.5

pH
 8~8.5

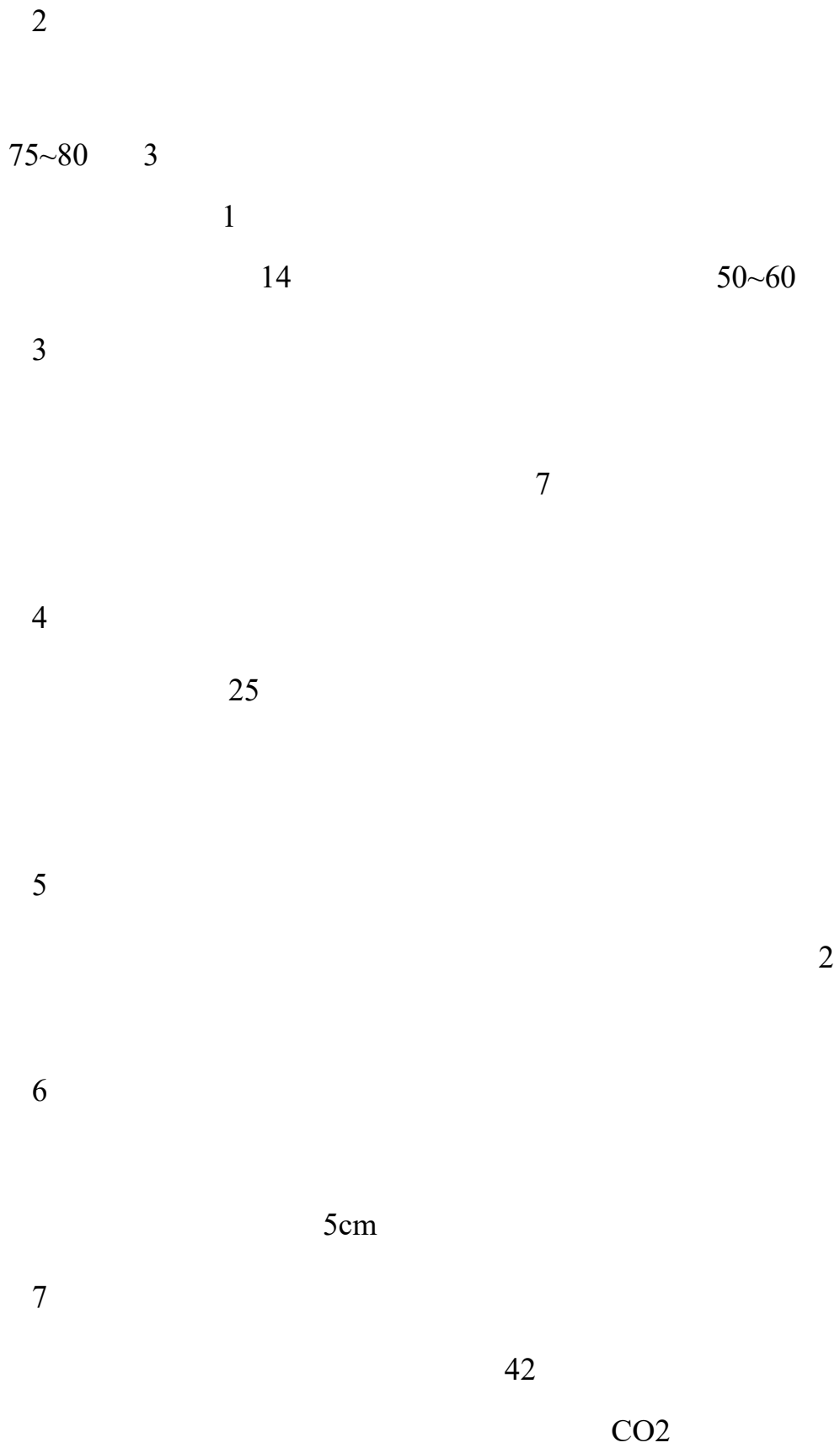
4

5



2

1



4-1

1		t	60559.49		
2		t	4015.73		
3		t	16012.34		
			30792.96		

4775413.29kWh/

116° 32°

“ ” “ ”

568km² 2022

27.9

21.64

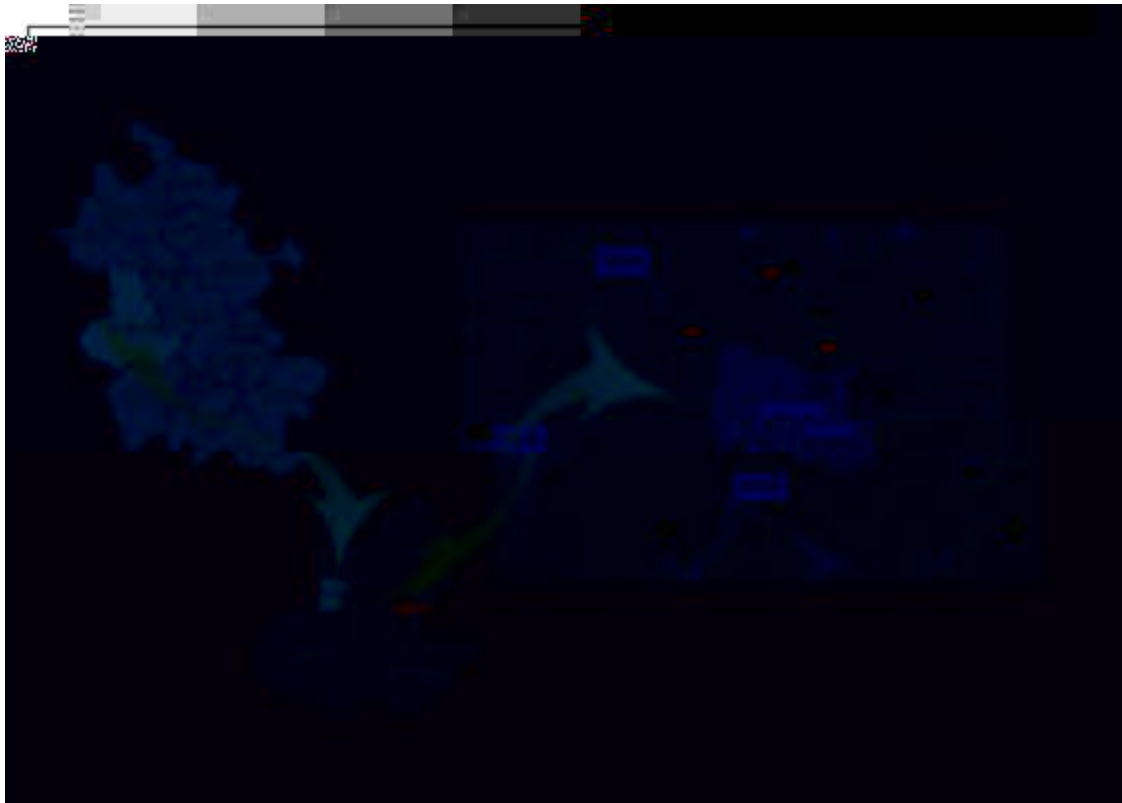
6 ()

15

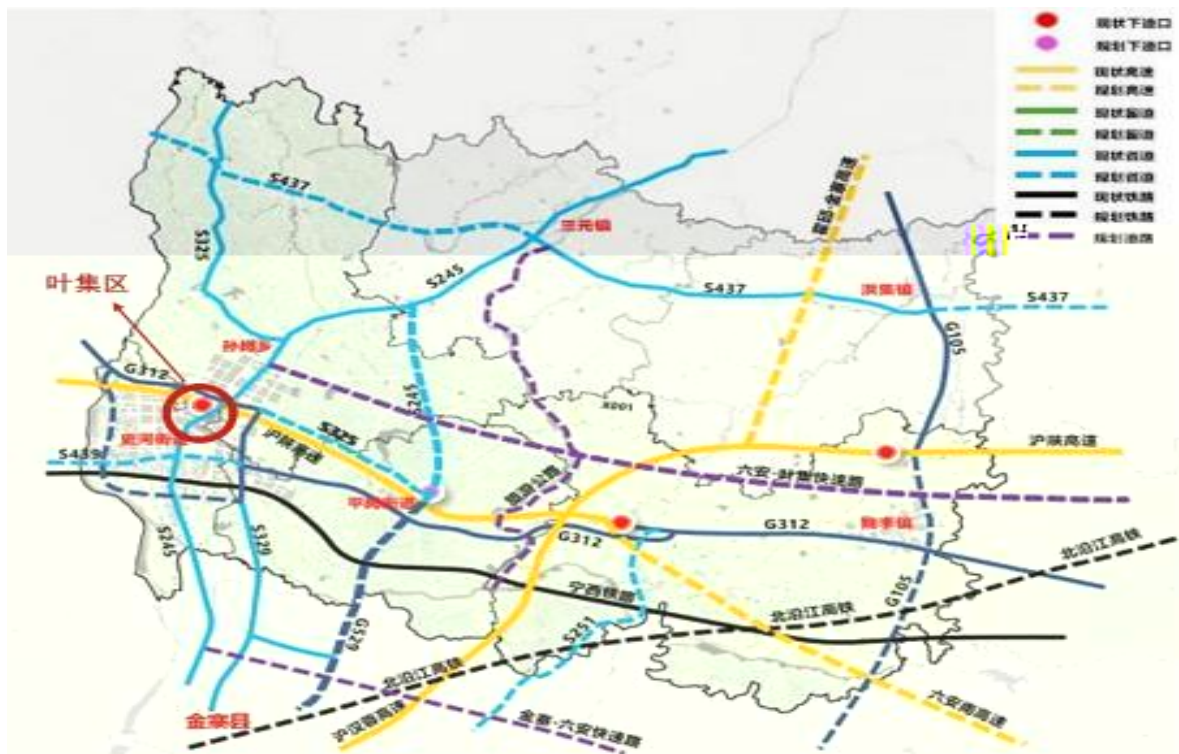
25

70

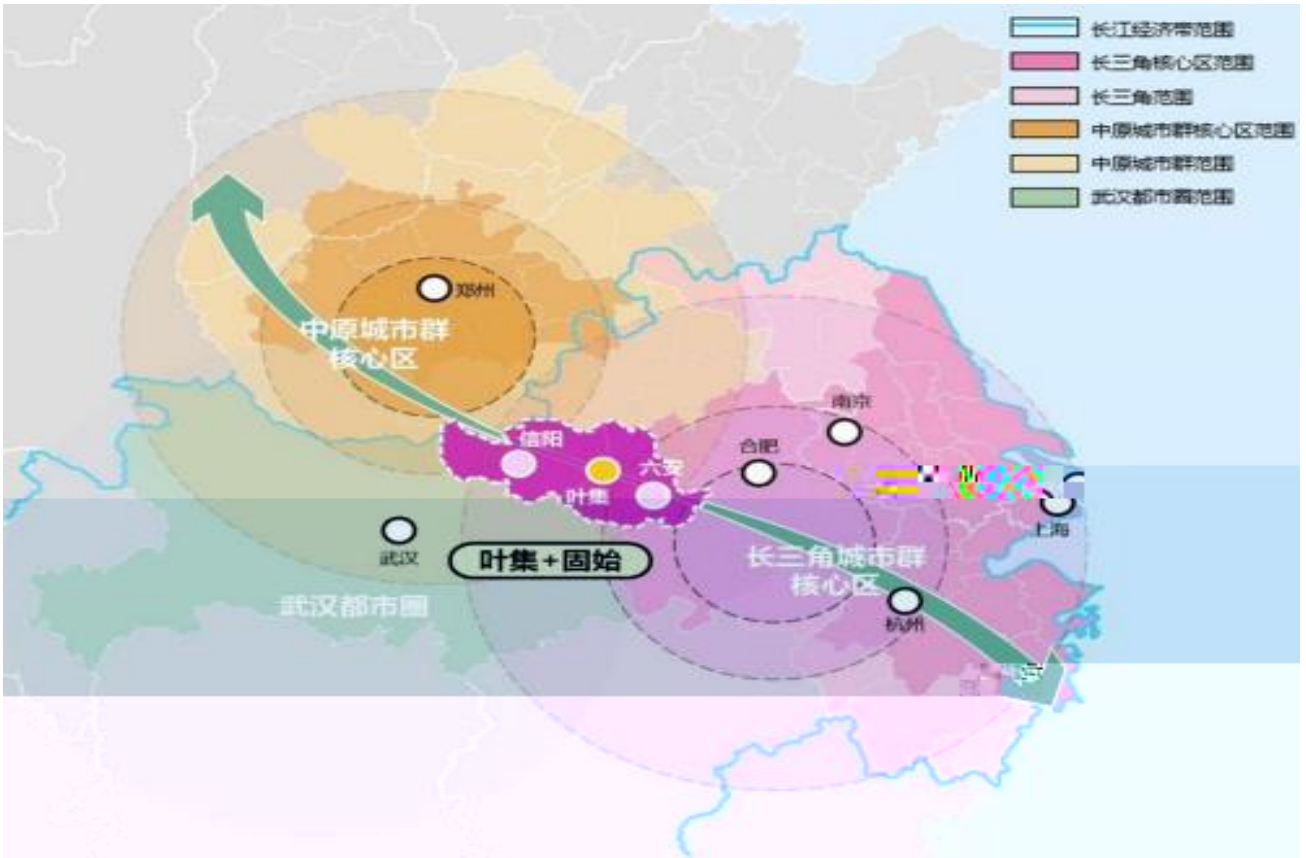
()



G312 G105



5



131.32

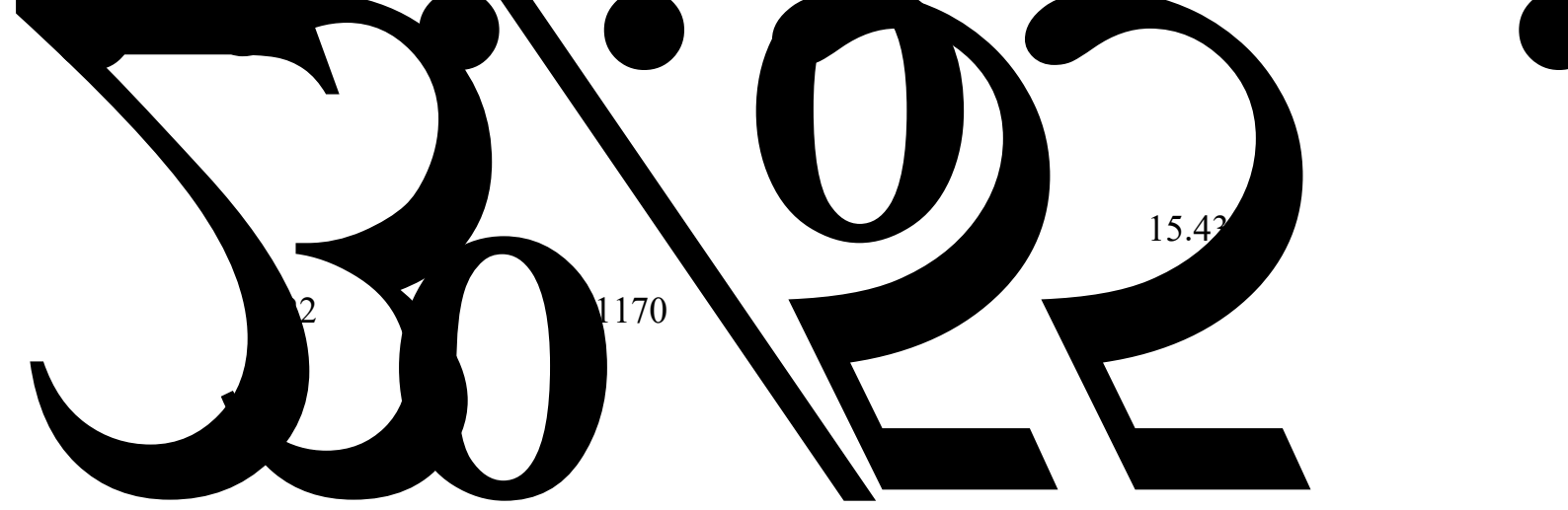
38.5—110

102.54

10—40

27.855

“ ”



023

2023 86.65
40% 0.2 0.6 5
12.8 5.3 % 34.4
9.3 % 30.4 44 % 20%
32.9% 0033 ...

2023	149549	27.37%	
63006	9.15%	231349	
21.64%	51493	13.66%	
36341	23.82%	51532	8.54%
14192	15.01%	2023	48269
46.02%	80242	42.97%	2023
	49000	65.23%	24004
	500.1%		

1

2

3

4

5

6

7

5

↑

ΑΝΤΙΣΤΡΟΦΗ ΕΠΙΣΤΡΟΦΗ
() ΝΕΡΟ ΠΡΟΣΤΙΘΕΝΟΝ (LP G D7E 0N`&

7N &(P 38D7EF

4		
5	1100 / 304 1 1 1 1 5 1 F9	2 3 1 4 1 1 11kw G4
6		24000 [[1]]1 3 /
7		4 / 3 /
8		1 / 1 /
9		1 1 1 UPS 1
10		11kw
11		72
12		10cm
13		B1 40 4.6*6
14		304 10 B1
15		1.8*2.3
16		150kg/ 31.5m 1.5m 6
17		650*550*3700mm 600mm 2 12 2 1 1 1 1 2 7.5kw

16		18000kw 3 1 4 2 2 3 6 4 5. 6. 1
17		3000kW, 3 1 1 5. 1 6.
18		144 2400*900*100mm 216 35
19		3385×2085×636 150kg 5mm 3150mm
20		0.24 0.24 mm0.85-0.95 320
21		LED 30W 1200mm; 320
22		6000 B1
23		304
24		+PVC
25		40P -1-2
26		V mm1200×20×13.6 20W 24V

--	--	--

1		
2		
3		
4		
5		
6		
7		<p>1. 2.</p> <p>37.5KW / / 13*4.2*5.1 50 /</p> <p>1 2</p>
8		<p>56 1.2 EP400 1.</p> <p>10.0t 1.6 / 2. 21</p> <p>7.5KW</p>
9		<p>1. 304 3. 1. 1.</p> <p>/ / 16*5*5.1 17.5t 4.0</p> <p>1.9 2. 300t/h 7</p> <p>4. 70KW</p>
10		<p>1 304 3. 1 1.</p> <p>/ / 25.2*3.75*4.5 2. 300t/h 7</p> <p>3 1 3. 90KW 1</p> <p>19.5</p>
11		<p>1. 2.</p> <p>304 1 / / 6.2*5*5.1</p> <p>17.5t 2 70.0kw IP56</p> <p>3. 200-260t/h 5-6</p> <p>4. 2-18.5Kw</p> <p>30kw</p>

12				26		85			
13			80	2.8	55Kw	4-7.5Kw			
				IP56	1.6	EP400	1.6 /		30
						300m³/h			
14			1.						
			2.		304				
			1.	*	86	*2.4		45	
			2.		1.8m	8mm			
			3.		φ330		φ108		
			4.		1.5m/s				
			5.		31Kw		4-7.5Kw		IP56
			6.		300 /h				
						4			
15			1.			24	*7.8	*2	35
					φ330				/
			φ108			/		φ108	3.
									4.
			6.						5.
					7.				
							H		15mm
			15mm						15mm
			1		2	1.6 /		8.	300 /
			1.6 /			6.5		2	1.4
					1	1			304
16					50mm			2mm	304
17	PVC				PVC-U160				
18					13000m3/H	8400Pa		55kw	
						0.8	8	3mm	

19		1 2	4 /	1 /
20		45KW		
21		24		
22				
23		40000 /		11kw
24		7.5kw	80m ³ /	9
25		304		
26		100 /	304	
27		1 PE	1	1 4 15kW 600m ³ /
28		304		
29		PE	304	
30		30 A2/O + +		
31		GB14554-93 2 7.5kw 2750pa	55000m ³ /h 2 1 55kw FRP	100000m ³ /h , 3 50m ³ /h 20m 55000m ³ /h IP55 IP55 23

1		
2		1 139 1.4 EP400 1.6 / 26.4KW/ 52.8KW 0 26.4kw
3		1 144 1.8 EP400 1.6 / 4 37KW 2 31Kw 4-7.5Kw IP56 3 500m³/h
4		100 1 1
5		8T, 63kw 3.5 m/min 0.5-0.7 1 1
6		8T, 54kw 3.5 m/min 0.5-0.8 200 / 1 1
7		75kw 45000 / 304 340Pa 4*5*6 1 2 1 1 3 1 1 1 4 1 F9 G4
8		5*4*2 1 0.6*0.6
9		4*1.2*6 1*1 140
10		
11		
12		
13		4 2 2 2 1

14		75kw			
15		1	1	1	UPS 1
16					
17		3X400V-50HZ 46000m3/h			55KW
18					
19		20000m3/h			150
20		4.5	390 0.75kw	304	
21		4.5	390 0.75kw	304	
22		4.5 15	1.4 4KW	EP400	1.6 /
23		304		1.5	7.5KW
24			4.3	60	
25			4.1	40	.
26					
27					
28		4	1530kw		32
29					
30		,			0-3 .
31		1140*3960*150mm			
32		304			
33		PVC			
34			IP65	LED	25w/

35		
----	--	--

7

6.1.3.1

6.1.3.2

1

- - - -

2

- - - -

- - -

6.1.3.3

1

2

3

1

2

3

4

4

7.1.1.1

1

2

3

4

5

,

6

7

8

9

10

11

7.1.1.2

20m

20m

GB50016-2018

7.1.1.3

190

16-30

16

4

18

6

0.3%

1

2

1/2

2

7.1.4.1

7.1.4.2

1	GB 50009-2022
2	GBJ50010-2020
3	GB50011-2016
4	GB50003-2011
5	GB50007-2012
6	GB50017-2017
7	GB50016-2018
8	GB50046-2018

1

GB50016-2018

2

GB50016-2018

GB50046-2018

7

70036.76

1

1

GB50013-2018

GB50014-2021

GB50015-2019

DN200

- -

2

3

100m /h

63.55m /h

- -

4

GB50160-2018

15 L/S

2

21 L/S

1

25 L/S

2

61 L/S

10m

10m

5

GB50268-2008

2

1

10KV

GB50053-94

GB50052-95

GB50054-95

GB50055-93

GB50062-2008

GB50016-2016

GB50057-94

GB50116-98

GB50311 2016

GB/T50314 2015

GB50034-2013

2

3

10KV

350KVA

Ä~W 9 Djör, k

380/220V 50Hz

10/0.4KV

0.90

GB50062-2008

50-150LX

ZR-BV-500

ZR-BV-500

ZR-BV-500

6

6

0.9

6

TN-S

1

4

7

NH-BV

BV-105

24V

24V

NH-KVVP

1

2

1

2

6

3

1	1998	1	1
2	GB/T 2589-2008		
3	GB/T 3485-1998		
4	GB/T 7119-2006		
5	GB/T 3486-1993		
6	GB/T 4272-2008		
7		1992	1959
		“	”
8		“	”
	1997	2542	
1			

2

3

4

5

6

1

GB50187-2012

2

3

4

5

6

1

2

3

4

5

0.95 0.99

1

2

3

4

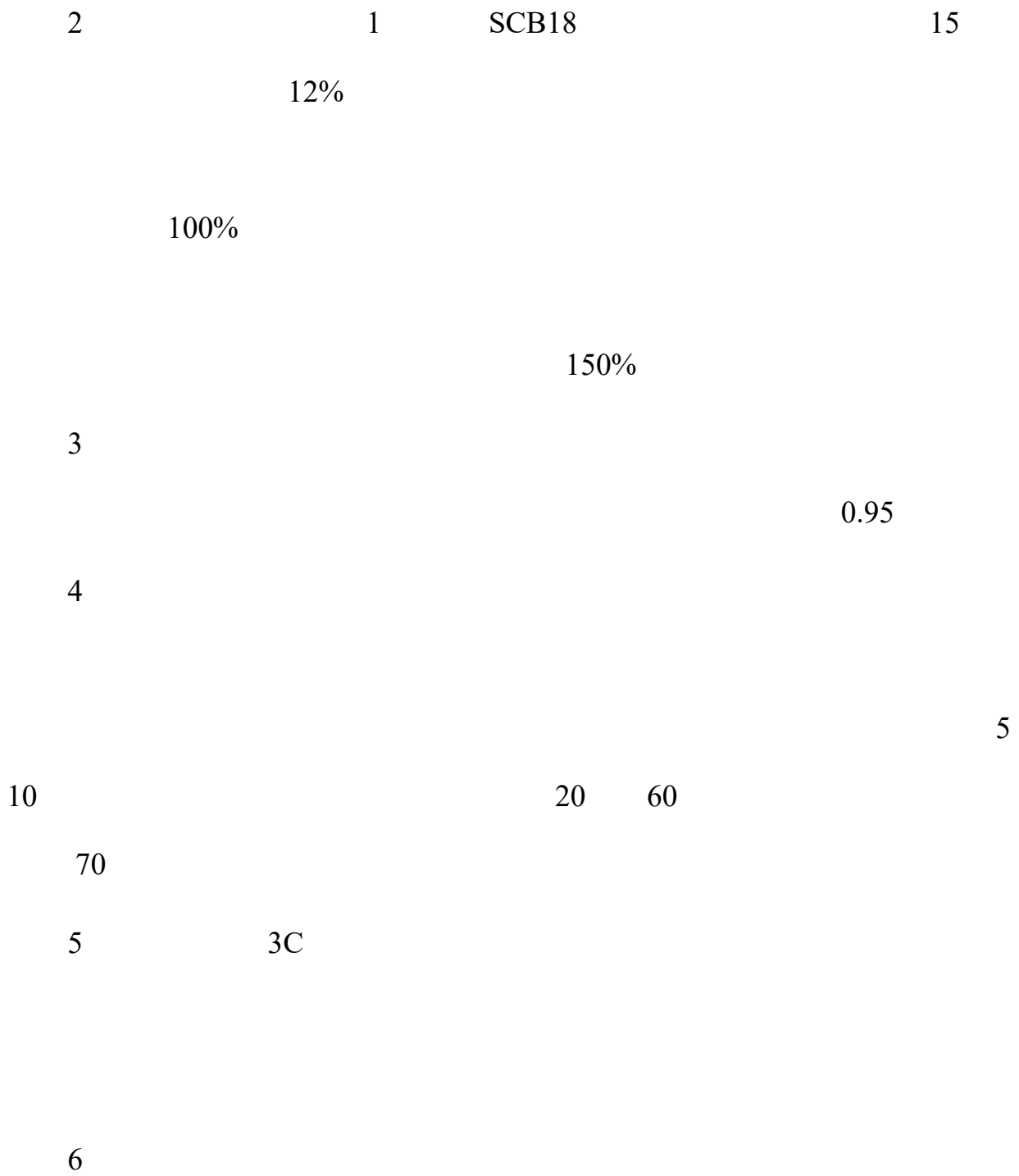
DCS

Q/GE01-2015

10%

15

1



1.

“ ”

,

2.

100 -180

2

3t/h

3t/h

1

GB51245-2017

0.5

0.15

2

GB51245-2017

4.3.2-6

3

4

GB50033-2013

5

6

7

8

9

10

8m

450-500mm

SBS

II

III

50

1 8

3%

≥8m

≥3m

≥1.2m

11

<

> GB18306-2001

6

0.05g

1

2

18m

3

4

GB55015-2021

GB55015-2021

GB51245-2017

GB/T50878-2013

1

2

3

5%

4

GB31436-2015 I

2L/min

I

1.9L I

3L

I

Q $\leq 0.08L/s$

5

6

7

1

2-5mm

2

3

PE

1

2

3

1

2

3

4

7

8

9

10

11

15%

12

13

14

15

16

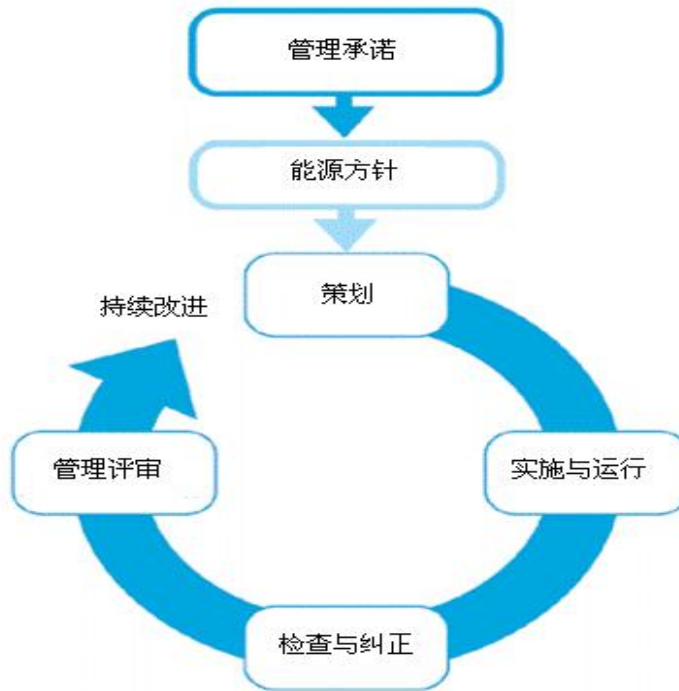
(GB/T23331-2009)

GB/T 15587-2008

GB17167-2006

GB/T23331-2009

“PDCA”



2

3

4

5

6

7

8

9

2008 4 1

GB/T 2589-2008

GB/T12712-1991

7961622.45m³

387.83m³

4775413.29kwh

357.88kwh

7.5-1

					(kg)
1		10 ⁴ kwh	477.54	1.229kg /kWh	586.90
2		10 ⁴ m ³	796.16	0.2571kg /m ³	204.69
					791.59

1

2019

2019

2

3

1	GB50015-2003	2009
2	GB50555-2010	

1

2

3

4

5

6

7

1

2

3

4

5

6

7

8

CJ/T 164-2014

1

2

3

4

5

(GB50016-2014 2018)

DN300

0.90MPa

4

3

1

2

3

4

5

6

1

29 2019

106 2009

2

GB50016-2014 2018

GB50140-2005

GB50116-2013

GB50058-2014

GB50058-2014

GB50057-2010

GB50219-2014

GB50151-2010

a

b

c

GB50016-2006

	100	1.5		
1				
1				
			50000m ³	24m
			40 L/s	
10 L/s	3		60 L/s	
1			756m ³	
2				
			50000m ³	24m

45 L/s
10 L/s
3 80 L/s 2
1170m³
1 2 1 1
Q=216 m³/h H=60m 2 Q=5.4m³/h H=60m V=6m³
1

DN100

DN100

GB50140-2005

2A

20m

1

N 0.06

30

30

2

220V/380V

,

()

TN-S

4

GB 50016-2014 2018

GB 50140-2005

1

6m

12m

5m

2

3

4

5

GB50140-2005

—

1	2018	12	29
2	2018	10	26
3	2018	1	1
4	2022	6	5
5	2019	1	1
6		2020	

GB8978

(GB12348-2008)

1

2

3

1

2

2020

2030

“

”

“

”

28 2018

2018

1987 105

2002 352

2003 376

2012 619

1 2005

47 2012

48 2012

49 2012

50

2012

“ ”

51

2012

2012

2012 73

1995 405

2013 48

142 2003

2000 189

“ ”

2013

51

2012 89

2018

GBZ1-2010

1

GBZ2.1-2019

2

GBZ2.2-2007

GBZ158-2003

GB50187-2012

GB50033-2013

GB/T 15236-2008

GB2894-2008

1

8

2

3

1

a

b

2

3

4

a

b

5

IP40

6

7

8

a

6

b

c

d

e

9

10

47

48 2012

49 2012

1

2

3

4

5

6

7

8

9

10

11

12

13

1		13	2014
2		29	2019
3		28	2018
4			
	2018		
5		2018	
6		549	2009
7			2010
23			
8			
36	2011		
9		17	2009
10		47	2012
11		1	2005
12			
30	2010		

23

2006 12 22

2007 3 1

GB50187-2012

GB4387-2008

GB50016-2014 2018

GB/T12801-2008

GB5083-1999

GB/T8175-2008

GB50316-2000

TSGD0001-2009

TSGR0004-2009

TSGR0003-2007

GB150-1998 2013

JB/T4735-1997

GB12241-2005

GB50351-2005

GB50034-2013

GB50011-2010

2000

0223-1

GB50046-200

GB50057-2010

50047-2005

GBZ2.2-2007

GBZ230-2010

GB17915-1999

GB17916-1999

GB17914-1999

GB15603-1995

GB50140-2005

1 GB4053.1-2009

2 GB4053.2-2009

3

GB4053.3-2009

GB7231-2003

GB/T8196-2003

GB12265-1990

GB13495-1992

GB15630-1995

GB2893-2008

GB2894-2008

GB/T11651-2008

AQ/T 9002-2006

1

2

3

4

5

6

7

1

2

3

6

4

200

9

6

12

9

Ä

1

2

f E:Ö:ÄÖ: ö

50 50 5 L=2.5m

40 5

85dB

60

10

1

2

3

4

5

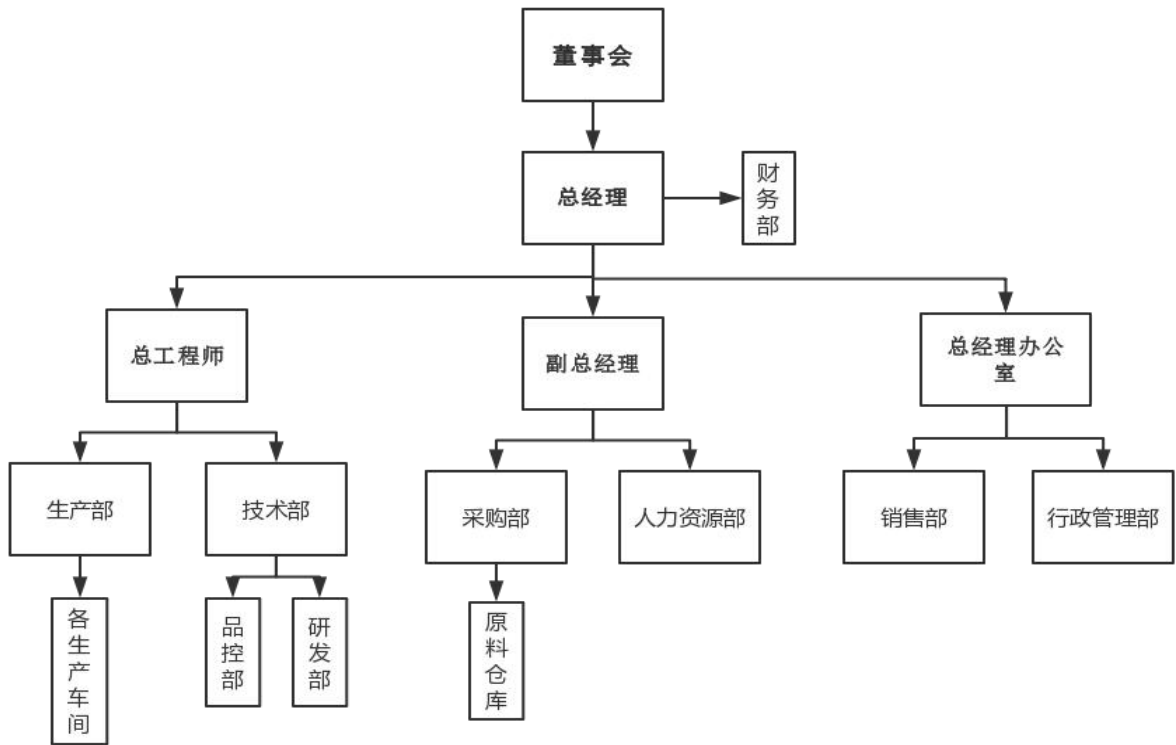
6

7

“ ”

1

2



70

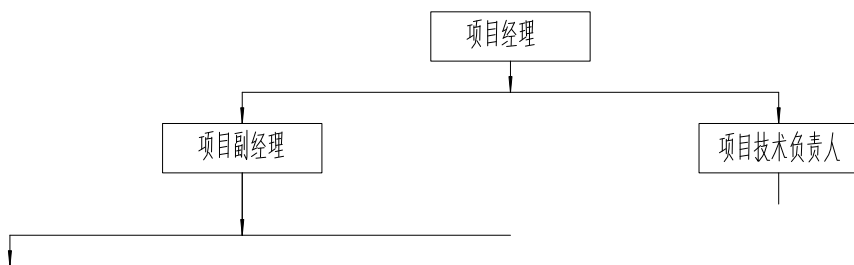
400

1

2

3

4



		1	2	3	4	5	6	7	8	9	10	11	12	13	14	15	16	17	18	19	20	21	22	23	24						
1		—————																													
2			—————																												
3				—————																											
4					—————																										
5											—————																				
6																						—————									
7																								—————							

5

1

2

3

1

2

3

4

5

1999 1340

1

2

2.1		0.07 /			13.30	13.30	
2.2		2016 504			882.11	882.11	
2.3		2015 299			96.60	96.60	
2.3.1		2015 299			68.80	68.80	
2.3.2		2015 299			27.80	27.80	
2.4					394.04	394.04	
2.5					315.23	315.23	
2.6		2002 1980 [2003]857			95.25	95.25	
2.7					197.02	197.02	
2.8					39.40	39.40	
2.9					100.00	100.00	
3.1					1246.09	1246.09	
3.2							

1106.56

470

20

450

12 /

50000 /

30%

4

3%

3489.71 /

1.

30

5

16049.83

508.24 /

20

23353.68

1109.30

/

2.

= ×10%

242.63 /

1.

20

5210.73

260.54 /

20

13.30

0.67 /

2.

8% 1880.67 /

190 0.07
13.30 /

10% 2350.83 /

40000 4.5%
1005.50 /

6015.33

$$\text{投资利润率} = \frac{\text{年平均利润总额}}{\text{投资总额}} \times 100\%$$

11.77%

10-

1

(BEP)

BEP

G

BEP

$$= \frac{\quad}{\quad} 100\%$$

S-K-C

$$= 55.88\%$$

G

S

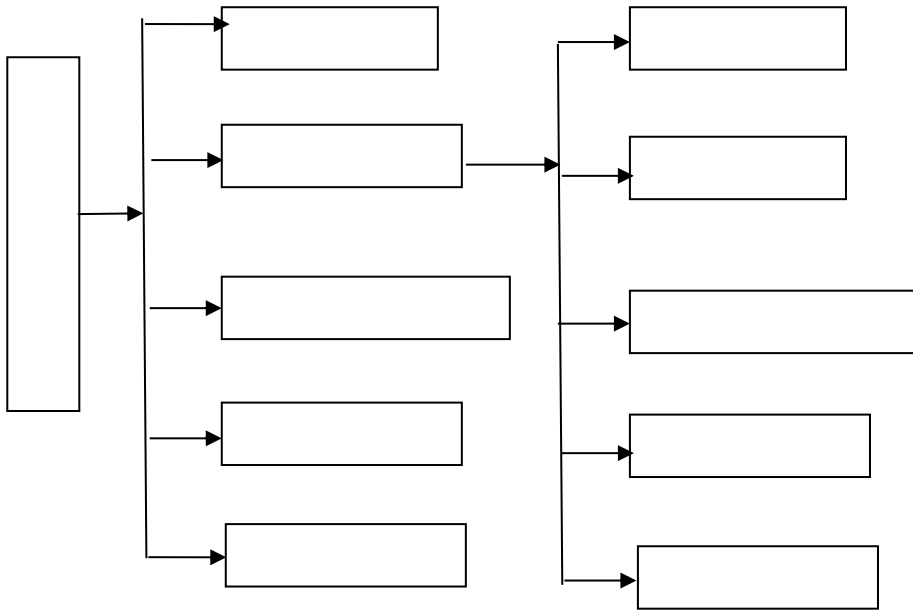
K

C

55.88%

55.88%

2019



1

2

3
60% 40%
4

2

(2019)

2019

2

8

Ä1

J

1

2

3

4

1

2

3

4

5

6

7

8

9

10

11

12

13

14

1			51087.24	
1.1			42782.54	
1.2			1845.00	
1.3			6459.70	
2				
2.1		/	211.79	
2.2		/	177.36	
2.3		/	7.85	
2.4		/	26.78	
2.5		/	268.88	
3			17493.01	
4			23508.34	
5			0.00	
6			6015.33	
7			6015.33	
8		%	11.77	
9			6.96	2
10			6.96	2
11		%	17.78	()
12		%	17.78	()
13			12787.56	2
14			12787.56	2
15		%	55.88	
16			18.00	

							(%)
1		16049.83	23353.68	0.00	0.00	39403.51	77.13%
1.1.1		2554.79	3674.12	0.00	0.00	6228.9	12.19%
1.1.2		3899.59	7329.05	0.00	0.00	11229	21.98%
1.1.3		5920.72	9559.41	0.00	0.00	15480	30.30%
1.1.4		3674.73	1796.50	0.00	0.00	5471.23	10.71%
1.1.5		0.00	994.60	0.00	0.00	994.60	1.95%
2					2132.94	2132.94	4.18%
2.1		0.07 /			13.30	13.30	0.03%
2.2		2016 504			882.11	882.11	1.73%
2.3		2015 299			96.60	96.60	0.19%
2.3.1		2015 299			68.80	68.80	0.13%
2.3.2		2015 299			27.80	27.80	0.05%
2.4					394.04	394.04	0.77%
2.5					315.23	315.23	0.62%
2.6		2002 1980 2003 857			95.25	95.25	0.19%
2.7					197.02	197.02	0.39%
2.8					39.40	39.40	0.08%
2.9					100.00	100.00	0.20%
3					1246.09	1246.09	2.44%
3.1					1246.09	1246.09	2.44%
3.2							
4		16049.83	23353.68	0.00	3379.03	42782.54	83.74%
5					1845.00	1845.00	3.61%
6					6459.70	6459.70	12.64%
7		16049.83	23353.68	0.00	5224.03	51087.24	100.00%
	(%)	31.4%	45.7%	0.0%	10.2%	100.0%	

15

2

2,800,000.00

560.00

1. 35 24 *7.8 *2 10
 330 / 108
 / 108 3.
 4. 5
 6.

16

21120

16.50

34.85

185

50

304

17

C

11700

160.00

187.20

187.20

C- 160

18

13

286,000.00

371.80

8400

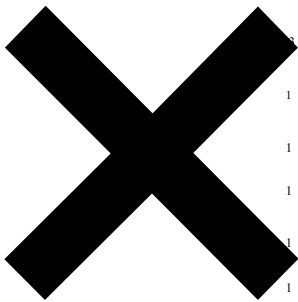
19

13

65,000.00

84.50

20



25,500.00

33.15

50 0

5

45

21

1

1,850,000.00

185.00

22

1

100,000.00

10.00

23

1

335,000.00

120

33.50

24

1

185,000.00

18.50

80 /

9 7.5

25

1

15,000.00

1

304

26

1

65,000.00

6.50

6.50

100 /

304

27

4

38,800.00

15.52

15.52

1 E

1 4

28

1

46,000.00

4.60

4.60

304

29

1

150,000.00

15.00

15.00

E

304

30

30

1

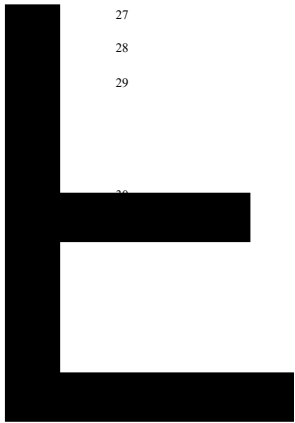
2,000,000.00

200.00

200.00

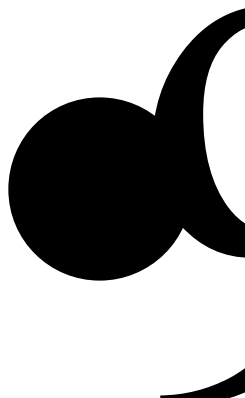
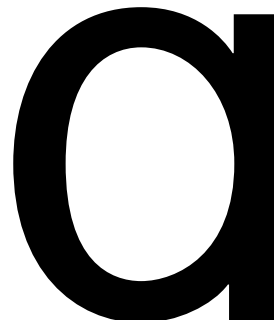
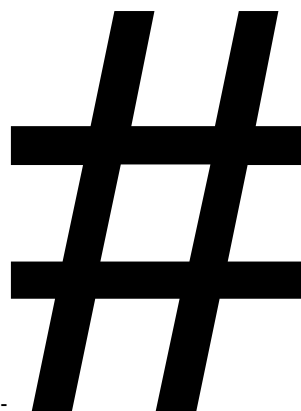
A2/

+ +



(g ".ä

@ "@X2EH +e



2		00.00		36		63			
5	2	00.00		36		1	1		
6						54	/		
						20			
						75			
						4*5*6	1		
						45000	/	340	
						2			
7	32	550,000.00	1760.00	1760.00		304		3	
						1		1	
						1	1		
						1	4	1	F9
						4			
8	64	16,500.00	105.60	105.60		5*4*2		1	0.6*0.6
9	32	165,000.00	528.00	528.00				4*1.2*6	1*1 140
10	6	7,500.00	4.50	4.50					
11	280	530.00	14.84	14.84					
12	64	7,500.00	48.00	48.00					
13	32	65,000.00	208.00	208.00		2	2	2	4 32
14	32	35,000.00	112.00	112.00				1	75
15	1	38,800.00	3.88	3.88		1	1	1	
16	1	860,000.00	86.00	86.00					
17	4	650,000.00	260.00	260.00		50	46000 3/	55	3 400 -
18	32	15,800.00	50.56	50.56					
19	1	550,000.00	55.00	55.00		20000 3/		150	
20	1	210,000.00	21.00	21.00		4.5		390	304
								0.75	
21	1	210,000.00	21.00	21.00		4.5		390	304
								0.75	
22	1	285,000.00	28.50	28.50		4.5		1.4	E 400
						1.6 /			
						15		4	
23	1	138,000.00	13.80	13.80		304		7.5	1.5
24	35	45,500.00	159.25	159.25					4.3
25	35	13,800.00	48.30	48.30		60			
26	2560	120.00	30.72	30.72				4.1	40 .
27	1	800,000.00	80.00	80.00					
28	1	8,000,000.00	800.00	800.00				4	1530
								32	
29	32	120,000.00	384.00	384.00					

4		1500	2	200	300.00		300.00	
5		72		235,000.00	1692.00		1692.00	1100 / 24000 / 2 / 304 3 1 1 1 1 1 4 1 1 11 5 1 F9 4
6		72		65,000.00	468.00		468.00	3 / 4 / 2 / 1 /
7		3		38,800.00	11.64		11.64	1 1 1 1 1
8		72		10,800.00	77.76		77.76	11
9		72		1,000.00	7.20		7.20	72
10		72		15,800.00	113.76		113.76	
11		144		18,500.00	266.40		266.40	40 10 B1 4.6*6
12		48200	2	285.00	1373.70		1373.70	304 10 B1
13		72		6,500.00	46.80		46.80	1.8*2.3
14		81648	2	246.00	2008.54		2008.54	150 / 31.5 / 1.5 6
15		6		132,000.00	79.20		79.20	650*550*3700 600 2 12 1 1 2 1 2 1 7.5
16		3		4,250,000.00	1275.00		1275.00	18000 3 1 4 2 2 6 3 4 5. 1 6.
17		3		952,000.00	285.60		285.60	3000 , 3 1 1 5. 1 6.
18		72		28,300.00	203.76		203.76	144 2400*900*100 216 35
19		300		12,000.00	360.00		360.00	3385 2085 636 150
20		87000	2	15.00	130.50		130.50	0.85-0.95 0.24 0.24 320
21		320		100.00	3.20		3.20	320 ED 30 1200 ;
22		3		1,950,000.00	585.00		585.00	B1 6000
23		450		1,230.00	55.35		55.35	304
24		3		1,250,000.00	375.00		375.00	+ C
25		3		230,000.00	69.00		69.00	40 -1-2
26		7200		100.00	72.00		72.00	1200 20 13.6 20 24
					5920.72		9559.41	0.00
1	1#	1803.68	2	1,200	216.44		216.44	
2		1284.36	2	1,500	192.65		192.65	
3		391.16	2	1,500	58.67		58.67	
4		2578.56	2	1,100	283.64		283.64	
5		32	2	2,000	6.40		6.40	

8		100	1,600,000.00	160,000.00	450.00	
9			2,000,000.00	200,000.00	6.00	
10			1,000,000.00	100,000.00	100.00	
11			250,000.00	25,000.00		
12		1	3,000,000.00	300,000.00	300.00	
13		1	5,000,000.00	500,000.00	500.00	10000
14		1	4,500,000.00	450,000.00	450.00	
15		1	2,000,000.00	200,000.00	200.00	
16		1	5,000,000.00	500,000.00	500.00	
17		2	750,000.00	150,000.00	150.00	<p>ö 1</p> <p>f=ü Ö hpPd+ P @</p> <p>Ö</p>
18		1	750,000.00	75,000.00	75.00	<p>80P</p> <p>5-5</p>
19		1	1,250,000.00	125,000.00	125.00	<p>1 480 / 1 1 60kw 1</p> <p>304</p>
20		2	1,560,000.00	312,000.00	312.00	€E=

27		2		1,350,000.00		270.00		270.00		
28		2		85,000.00		17.00		17.00		
29		1000		25.00		2.50		2.50		
30		300		120.00		3.60		3.60		
31		200		80.00		1.60		1.60		
32		1		330,000.00		33.00		33.00	304	4.8*6*1.1
33		50		2,200.00		11.00		11.00		
34		2		435,000.00		87.00		87.00		
35	6	2		750,000.00		150.00		150.00		
					3674.73	1796.50	0.00			
1		4		810,000.00		324.00		324.00		
2		4		320,000.00		128.00		128.00		
3		4		750,000.00		300.00		300.00		
4		4		330,000.00		132.00		132.00		
5		2		220,000.00		44.00		44.00		
6		3		58,000.00		17.40		17.40		
7		20		1,600.00		3.20		3.20		
8		2		230,000.00		46.00		46.00		
					0.00	994.60	0.00			
					16049.83	23353.68	0.00	39403.51		

		3	4	5	6	7	8	9	10	11	12	13	14	15	16	17	18	19	20
1	95000.87	4829.36	4829.36	4829.36	4829.36	5070.83	5070.83	5070.83	5070.83	5324.37	5324.37	5324.37	5324.37	5590.59	5590.59	5590.59	5590.59	5870.12	5870.12
2	19918.15	1106.56	1106.56	1106.56	1106.56	1106.56	1106.56	1106.56	1106.56	1106.56	1106.56	1106.56	1106.56	1106.56	1106.56	1106.56	1106.56	1106.56	1106.56
3	62814.73	3237.00	3237.00	3237.00	3334.11	3334.11	3334.11	3434.13	3434.13	3434.13	3537.16	3537.16	3537.16	3643.27	3643.27	3643.27	3752.57	3752.57	3752.57
4	33483.17	1860.18	1860.18	1860.18	1860.18	1860.18	1860.18	1860.18	1860.18	1860.18	1860.18	1860.18	1860.18	1860.18	1860.18	1860.18	1860.18	1860.18	1860.18
4.1	29115.80	1617.54	1617.54	1617.54	1617.54	1617.54	1617.54	1617.54	1617.54	1617.54	1617.54	1617.54	1617.54	1617.54	1617.54	1617.54	1617.54	1617.54	1617.54
4.2	4367.37	242.63	242.63	242.63	242.63	242.63	242.63	242.63	242.63	242.63	242.63	242.63	242.63	242.63	242.63	242.63	242.63	242.63	242.63
5	43243.30	1989.98	2174.58	2323.99	2433.89	2451.49	2451.49	2451.49	2451.49	2451.49	2451.49	2451.49	2451.49	2451.49	2451.49	2451.49	2451.49	2451.49	2451.49
	9391.29	521.74	521.74	521.74	521.74	521.74	521.74	521.74	521.74	521.74	521.74	521.74	521.74	521.74	521.74	521.74	521.74	521.74	521.74
	33852.01	1468.24	1652.84	1837.25	1912.15	1929.75	1929.75	1929.75	1929.75	1929.75	1929.75	1929.75	1929.75	1929.75	1929.75	1929.75	1929.75	1929.75	1929.75
6	226.80	12.60	12.60	12.60	12.60	12.60	12.60	12.60	12.60	12.60	12.60	12.60	12.60	12.60	12.60	12.60	12.60	12.60	12.60
7	18099.00	1779.75	1779.75	1712.25	1599.75	1487.25	1374.75	1262.25	1149.75	1048.50	937.25	868.50	778.50	688.50	578.25	447.75	317.25	19.00	63.00
	18099.00	1779.75	1779.75	1712.25	1599.75	1487.25	1374.75	1262.25	1149.75	1048.50	937.25	868.50	778.50	688.50	578.25	447.75	317.25	19.00	63.00
8	42315.00	2335.25	2335.25	2252.81	2390.19	2412.19	2412.19	2412.19	2412.19	2412.19	2412.19	2412.19	2412.19	2412.19	2412.19	2412.19	2412.19	2412.19	2412.19
9	31487.00	17653.88	17053.88	1622.15	17554.04	17722.61	17597.63	17485.13	17622.61	17560.45	17470.45	17752.78	17642.53	17511.83	17642.11	17516.11			
9.1	13710.00	7480.95	7880.50	712.23	8284.01	8211.11	8098.61	86.11	7873.61	7772.36	7661.11	7592.36	7502.36	7412.36	7302.11	7191.61	6912.86	6786.86	
9.2																			

5653.8

			3	4	5	6	7	8	9	10	11	12	13	14	15	16	17	18	19	20
1																				
			38708.00																	
			1617.54	1617.54	1617.54	1617.54	1617.54	1617.54	1617.54	1617.54	1617.54	1617.54	1617.54	1617.54	1617.54	1617.54	1617.54	1617.54	1617.54	1617.54
			37090.46	35472.91	33855.37	32237.82	30620.28	29002.73	27385.19	25767.65	24150.10	22532.56	20915.01	19297.47	17679.92	16062.38	14444.83	12827.29	11209.75	9592.20
1.1		30																		
			16049.83																	
			508.24	508.24	508.24	508.24	508.24	508.24	508.24	508.24	508.24	508.24	508.24	508.24	508.24	508.24	508.24	508.24	508.24	508.24
	(5%)		15541.59	15033.34	14525.10	14016.85	13508.61	13000.36	12492.12	11983.87	11475.63	10967.38	10459.14	9950.90	9442.65	8934.41	8426.16	7917.92	7409.67	6901.43
1.2		20																		
			23353.68																	
			1109.30	1109.30	1109.30	1109.30	1109.30	1109.30	1109.30	1109.30	1109.30	1109.30	1109.30	1109.30	1109.30	1109.30	1109.30	1109.30	1109.30	1109.30
	(5%)		22244.38	21135.08	20025.78	18916.48	17807.18	16697.88	15588.58	14479.28	13369.98	12260.68	11151.38	10042.08	8932.78	7823.48	6714.18	5604.88	4495.58	3386.28
1.2		30																		
			0.00																	
			0.00	0.00	0.00	0.00	0.00	0.00	0.00	0.00	0.00	0.00	0.00	0.00	0.00	0.00	0.00	0.00	0.00	0.00
	(5%)		0.00	0.00	0.00	0.00	0.00	0.00	0.00	0.00	0.00	0.00	0.00	0.00	0.00	0.00	0.00	0.00	0.00	0.00
2			38708.00																	
			1617.54	1617.54	1617.54	1617.54	1617.54	1617.54	1617.54	1617.54	1617.54	1617.54	1617.54	1617.54	1617.54	1617.54	1617.54	1617.54	1617.54	1617.54
			37090.46	35472.91	33855.37	32237.82	30620.28	29002.73	27385.19	25767.65	24150.10	22532.56	20915.01	19297.47	17679.92	16062.38	14444.83	12827.29	11209.75	9592.20

			1	2	3	4	5	6	7	8	9	10	11	12	13	14	15	16	17	18	19	20
1			13.30																			
			261.20	261.20	261.20	261.20	261.20	261.20	261.20	261.20	261.20	261.20	261.20	261.20	261.20	261.20	261.20	261.20	261.20	261.20	261.20	261.20
			273.17	272.51	271.84	271.18	270.51	269.85	269.18	268.52	267.85	267.19	266.52	265.86	265.19	264.53	263.86	263.20	262.53	261.87	261.20	260.54
1.1		20																				
1.2		20	13.30																			
			0.67	0.67	0.67	0.67	0.67	0.67	0.67	0.67	0.67	0.67	0.67	0.67	0.67	0.67	0.67	0.67	0.67	0.67	0.67	0.67
			12.64	11.97	11.31	10.64	9.98	9.31	8.65	7.98	7.32	6.65	5.99	5.32	4.66	3.99	3.33	2.66	2.00	1.33	0.67	0.00
1.3		10																				
2		20	5210.73																			
			260.54	260.54	260.54	260.54	260.54	260.54	260.54	260.54	260.54	260.54	260.54	260.54	260.54	260.54	260.54	260.54	260.54	260.54	260.54	260.54
			4950.20	4689.66	4429.12	4168.59	3908.05	3647.51	3386.98	3126.44	2865.90	2605.37	2344.83	2084.29	1823.76	1563.22	1302.68	1042.15	781.61	521.07	260.54	0.00
3			5224.03																			
			521.74	521.74	521.74	521.74	521.74	521.74	521.74	521.74	521.74	521.74	521.74	521.74	521.74	521.74	521.74	521.74	521.74	521.74	521.74	521.74
			5223.37	4962.17	4700.97	4439.76	4178.56	3917.36	3656.16	3394.96	3133.76	2872.55	2611.35	2350.15	2088.95	1827.75	1566.55	1305.34	1044.14	782.94	521.74	260.54

			3	4	5	6	7	8	9	10	11	12	13	14	15	16	17	18	19	20
1		423150.14	18352.98	20660.55	#####	23901.90	24121.90	24121.90	24121.90	24121.90	24121.90	24121.90	24121.90	24121.90	24121.90	24121.90	24121.90	24121.90	24121.90	24121.90
2		0	0	0	0	0	0	0	0	0	0	0	0	0	0	0	0	0	0	0
3		314874.24	16653.88	17053.49	#####	17554.04	17722.61	17610.11	17597.63	17485.13	17637.43	17650.45	17560.45	17470.45	17752.78	17642.53	17512.03	17490.83	17642.11	17516.11
4	(1-2-3)	108275.91	1699.10	3607.06	5205.96	6347.86	6399.29	6511.79	6524.27	6636.77	6484.47	6471.45	6561.45	6651.45	6369.12	6479.37	6609.87	6631.07	6479.79	6605.79
5		108275.91	1699.10	3607.06	5205.96	6347.86	6399.29	6511.79	6524.27	6636.77	6484.47	6471.45	6561.45	6651.45	6369.12	6479.37	6609.87	6631.07	6479.79	6605.79
6		108275.91	1699.10	3607.06	5205.96	6347.86	6399.29	6511.79	6524.27	6636.77	6484.47	6471.45	6561.45	6651.45	6369.12	6479.37	6609.87	6631.07	6479.79	6605.79
7		0.00	0.00	0.00	0.00	0.00	0.00	0.00	0.00	0.00	0.00	0.00	0.00	0.00	0.00	0.00	0.00	0.00	0.00	0.00
8		108275.91	1699.10	3607.06	5205.96	6347.86	6399.29	6511.79	6524.27	6636.77	6484.47	6471.45	6561.45	6651.45	6369.12	6479.37	6609.87	6631.07	6479.79	6605.79
9	10%	10827.59	169.91	360.71	520.60	634.79	639.93	651.18	652.43	663.68	648.45	647.14	656.14	665.14	636.91	647.94	660.99	663.11	647.98	660.58
10	5%	5413.80	84.96	180.35	260.30	317.39	319.96	325.59	326.21	331.84	324.22	323.57	328.07	332.57	318.46	323.97	330.49	331.55	323.99	330.29
11		92034.52	1444.24	3066.00	4425.07	5395.68	5439.40	5535.02	5545.63	5641.25	5511.80	5500.73	5577.23	5653.73	5413.75	5507.46	5618.39	5636.41	5507.82	5614.92
12																				
13		92034.52	1444.24	3066.00	4425.07	5395.68	5439.40	5535.02	5545.63	5641.25	5511.80	5500.73	5577.23	5653.73	5413.75	5507.46	5618.39	5636.41	5507.82	5614.92
14		126374.91	3494.60	5386.81	6918.21	7947.61	7886.54	7886.54	7786.52	7786.52	7532.97	7429.95	7429.95	7429.95	7057.62	7057.62	7057.62	6948.32	6668.79	6668.79
15		164882.00	5633.88	7526.09	9057.50	10086.89	10025.82	10025.82	9925.80	9925.80	9672.26	9569.23	9569.23	9569.23	9196.90	9196.90	9196.90	9087.60	8808.07	8808.07

11.77%

24.9%

27.51%

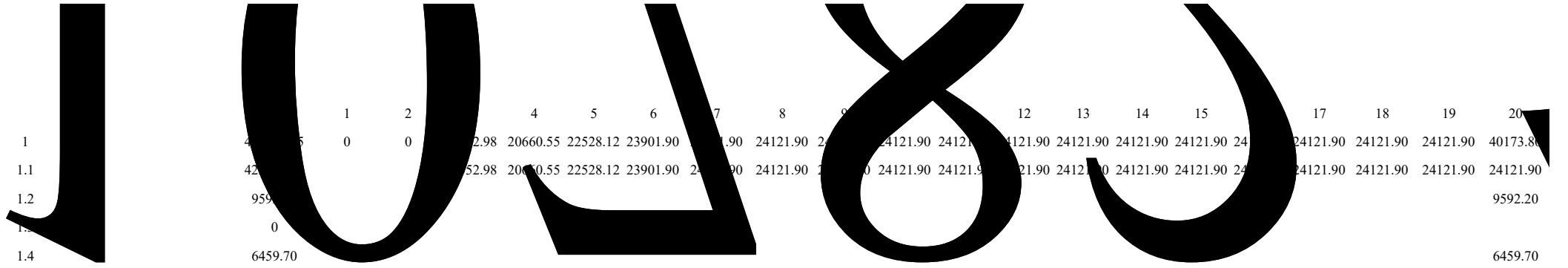
12.43%

24.9%

70.93%

				1	2	3	4	5	6	7	8	9	10	11	12	13	14	15	16	17	18	19	20
1		92674.40				5633.88	7526.09	9057.50	10086.89	10025.82	10025.82	9925.80	9925.80	9672.26	9569.23	9569.23	9569.23	9196.90	9196.90	9196.90	9087.60	8808.07	8808.07
1.1		241219.00				18352.98	20660.55	22528.12	23901.90	24121.90	24121.90	24121.90	24121.90	24121.90	24121.90	24121.90	24121.90	24121.90	24121.90	24121.90	24121.90	24121.90	24121.90
1.1.1		241219.00				18352.98	20660.55	22528.12	23901.90	24121.90	24121.90	24121.90	24121.90	24121.90	24121.90	24121.90	24121.90	24121.90	24121.90	24121.90	24121.90	24121.90	24121.90
1.1.2																							
1.1.3																							
1.1.4																							
1.2		258268.14				12719.09	13134.46	13470.62	13815.01	14096.08	14096.08	14196.10	14196.10	14449.64	14552.67	14552.67	14552.67	14925.00	14925.00	14925.00	15034.30	15313.83	15313.83
1.2.1		258268.14				12719.09	13134.46	13470.62	13815.01	14096.08	14096.08	14196.10	14196.10	14449.64	14552.67	14552.67	14552.67	14925.00	14925.00	14925.00	15034.30	15313.83	15313.83
1.2.2																							
1.2.3		0				0	0	0	0	0	0	0	0	0	0	0	0	0	0	0	0	0	0
1.2.4		0				0	0	0	0	0	0	0	0	0	0	0	0	0	0	0	0	0	0
1.2.5		0.00				0.00	0.00	0.00	0.00	0.00	0.00	0.00	0.00	0.00	0.00	0.00	0.00	0.00	0.00	0.00	0.00	0.00	0.00
1.2.6																							
2		-42782.54	-25669.53	-17113.02		0	0	0	0	0	0	0	0	0	0	0	0	0	0	0	0	0	0
2.1																							
2.2		42782.54	25669.53	17113.02		0	0	0	0	0	0	0	0	0	0	0	0	0	0	0	0	0	0
2.2.1		42782.54	25669.53	17113.02																			
2.2.2																							
2.2.3		0				0	0	0															
2.2.4																							
3		-8856.76	29545.35	19696.90		-1995.50	-2279.75	-4212.25	-4099.75	-3987.25	-3874.75	-3762.25	-3649.75	-3048.50	-2958.50	-2868.50	-2778.50	-2688.50	-3478.25	-3347.75	-3217.25	-2989.00	-2863.00
3.1		51087.24	30017.85	21069.40		0	0	0	0	0	0	0	0	0	0	0	0	0	0	0	0	0	0
3.1.1		11087.24	9017.85	2069.40		0	0	0															
3.1.2		40000.00	21000.00	19000.00																			
3.1.3		0				0	0	0															
3.1.4																							
3.1.5																							
3.1.6																							
3.2		59944.00	472.50	1372.50		1995.50	2279.75	4212.25	4099.75	3987.25	3874.75	3762.25	3649.75	3048.50	2958.50	2868.50	2778.50	2688.50	3478.25	3347.75	3217.25	2989.00	2863.00
3.2.1		19944.00	472.50	1372.50		1795.50	1779.75	1712.25	1599.75	1487.25	1374.75	1262.25	1149.75	1048.50	958.50	868.50	778.50	688.50	578.25	447.75	317.25	189.00	63.00
3.2.2		40000.00				200.00	500.00	2500.00	2500.00	2500.00	2500.00	2500.00	2500.00	2000.00	2000.00	2000.00	2000.00	2000.00	2900.00	2900.00	2900.00	2800.00	2800.00
3.2.3						0	0	0	0	0	0	0	0	0	0	0	0	0	0	0	0	0	0
3.2.4																							
4	1+2+3	113242.70	3875.82	2583.88		3638.38	5246.34	4845.25	5987.14	6038.57	6151.07	6163.55	6276.05	6623.76	6610.73	6700.73	6790.73	6508.40	5718.65	5849.15	5870.35	5819.07	5945.07
5			0	0		3638.38	8884.73	13729.97	19717.11	25755.68	31906.75	38070.30	44346.35	50970.11	57580.84	64281.57	71072.31	77580.71	83299.36	89148.51	95018.86	100837.93	106783.00

	1	2	3	4	5	6	7	8	9	10	11	12	13	14	15	16	17	18	19	20
1	21000.00	19000.00	51459.72	55000.38	58106.95	62362.89	66649.89	70922.21	75252.86	79650.16	84511.38	89290.58	94112.57	99024.56	103824.86	107664.77	111635.17	115676.87	119745.31	123811.64
1.1	0.00		9145.89	14565.30	19550.62	25685.30	31851.04	38002.12	44211.51	50487.56	57227.52	63885.47	70586.20	77376.94	84055.99	89774.64	95623.79	101544.24	107491.42	113436.50
1.1.1			2119.85	2189.08	2245.10	2302.50	2349.35	2349.35	2366.02	2366.02	2408.27	2425.44	2425.44	2425.44	2487.50	2487.50	2487.50	2505.72	2552.30	2552.30
1.1.2			2257.13	2291.75	2319.76	2352.51	2426.23	2426.23	2438.74	2438.74	2512.69	2525.56	2525.56	2525.56	2616.48	2616.48	2616.48	2630.14	2711.67	2711.67
1.1.3			1130.53	1199.76	1255.78	1313.18	1319.78	1319.78	1336.45	1336.45	1336.45	1353.62	1353.62	1353.62	1371.31	1371.31	1371.31	1389.52	1389.52	1389.52
1.1.4			3638.38	8884.73	13729.97	19717.11	25755.68	31906.75	38070.30	44346.35	50970.11	57580.84	64281.57	71072.31	77580.71	83299.36	89148.51	95018.86	100837.93	106783.00
1.2	21000.00	19000.00																		
1.3			37090.46	35472.91	33855.37	32237.82	30620.28	29002.73	27385.19	25767.65	24150.10	22532.56	20915.01	19297.47	17679.92	16062.38	14444.83	12827.29	11209.75	9592.20
1.4			5223.37	4962.17	4700.97	4439.76	4178.56	3917.36	3656.16	3394.96	3133.76	2872.55	2611.35	2350.15	2088.95	1827.75	1566.55	1305.34	1044.14	782.94
2	30017.85	30087.24	52751.23	55858.29	58564.25	62412.11	66318.11	70329.90	74354.16	78490.93	82982.44	87453.89	92015.34	96666.79	101043.31	104622.67	108332.54	112063.61	115751.16	119556.95
2.1			164.89	164.89	164.89	164.89	171.59	171.59	171.59	171.59	178.64	178.64	178.64	178.64	186.03	186.03	186.03	186.03	193.80	193.80
2.1.1			164.89	164.89	164.89	164.89	171.59	171.59	171.59	171.59	178.64	178.64	178.64	178.64	186.03	186.03	186.03	186.03	193.80	193.80
2.1.2			0.00	0.00	0.00	0.00	0.00	0.00	0.00	0.00	0.00	0.00	0.00	0.00	0.00	0.00	0.00	0.00	0.00	0.00
2.1.3																				
2.2	21000.00	19000.00	39800.00	39300.00	36800.00	34300.00	31800.00	29300.00	26800.00	24300.00	22300.00	20300.00	18300.00	16300.00	14300.00	11400.00	8500.00	5600.00	2800.00	0.00
	21000.00	19000.00	39964.89	39464.89	36964.89	34464.89	31971.59	29471.59	26971.59	24471.59	22478.64	20478.64	18478.64	16478.64	14486.03	11586.03	8686.03	5786.03	2993.80	193.80
2.3	9017.85	11087.24	12786.35	16393.40	21599.37	27947.22	34346.51	40858.30	47382.57	54019.33	60503.81	66975.26	73536.71	80188.16	86557.27	93036.64	99646.51	106277.58	112757.36	119363.15
2.3.1	9017.85	11087.24	11087.24	11087.24	11087.24	11087.24	11087.24	11087.24	11087.24	11087.24	11087.24	11087.24	11087.24	11087.24	11087.24	11087.24	11087.24	11087.24	11087.24	11087.24
2.3.2			0.00	0.00	0.00	0.00	0.00	0.00	0.00	0.00	0.00	0.00	0.00	0.00	0.00	0.00	0.00	0.00	0.00	0.00
2.3.3			254.87	795.92	1576.82	2529.00	3488.89	4465.66	5444.30	6439.81	7412.48	8383.20	9367.42	10365.14	11320.50	12292.41	13283.89	14278.55	15250.52	16241.39
2.3.4			1444.24	4510.24	8935.30	14330.98	19770.38	25305.40	30851.02	36492.28	42004.08	47504.81	53082.04	58735.78	64149.53	69656.99	75275.37	80911.78	86419.60	92034.52
	100.00	100.00	77.66	71.75	63.62	55.27	47.97	41.55	35.84	30.72	26.60	22.93	19.63	16.64	13.95	10.76	7.78	5.00	2.50	0.16
			5546.77	8833.51	11856.99	15577.53	18561.83	22146.49	25765.14	29422.63	32035.63	35762.71	39513.74	43315.15	45183.60	48257.6-8				



2	301050.69	25669.53	17113.02	12719.09	13134.46	13470.62	13815.01	14096.08	14096.08	14196.10	14196.10	14449.64	14552.67	14552.67	14552.67	14925.00	14925.00	14925.00	15034.30	15313.83	15313.83
2.1	42782.54	25669.53	17113.02																		
2.3	0			0	0	0															
2.4	258268.14			12719.09	13134.46	13470.62	13815.01	14096.08	14096.08	14196.10	14196.10	14449.64	14552.67	14552.67	14552.67	14925.00	14925.00	14925.00	15034.30	15313.83	15313.83
2.5	0			0	0	0	0	0	0	0	0	0	0	0	0	0	0	0	0	0	0
2.6	0.00			0.00	0.00	0.00	0.00	0.00	0.00	0.00	0.00	0.00	0.00	0.00	0.00	0.00	0.00	0.00	0.00	0.00	0.00

3	(1-2)	138151.36	-25669.53	-17113.02	5633.88	7526.09	9057.50	10086.89	10025.82	10025.82	9925.80	9925.80	9672.26	9569.23	9569.23	9569.23	9196.90	9196.90	9196.90	9087.60	8808.07	24859.97
4			-25669.53	-42782.54	-37148.66	-29622.57	#####	-10478.18	-452.36	9573.46	19499.26	29425.06	39097.31	48666.55	58235.78	67805.01	77001.91	86198.81	95395.71	104483.31	113291.38	138151.36
5	(1-2+2.5)	138151.36	-25669.53	-17113.02	5633.88	7526.09	9057.50	10086.89	10025.82	10025.82	9925.80	9925.80	9672.26	9569.23	9569.23	9569.23	9196.90	9196.90	9196.90	9087.60	8808.07	24859.97
6			-25669.53	-42782.54	-37148.66	-29622.57	#####	-10478.18	-452.36	9573.46	19499.26	29425.06	39097.31	48666.55	58235.78	67805.01	77001.91	86198.81	95395.71	104483.31	113291.38	138151.36

17.78% 17.78%



		12,787.56	17.78%	6.96		
10%		24,999.64	21.94%	6.14	23.41%	
-10%		575.48	13.23%	8.11	-25.61%	
	10%	5,326.77	15.05%	7.71	-15.34%	
	-10%	20,248.34	20.37%	6.45	14.58%	
		10%	9,175.72	16.19%	7.47	-8.93%
		-10%	16,399.40	19.63%	6.60	10.43%

14-3

		1	2	3	4	5	6	7	8	9	10	11	12	13	14	15	16	17	18	19	20
1	181931.14	0.00																			

14-5

1 2 3 4 5 6 7 8 9 10 11 12 13 14 15 16 17 18 19 20

1

